



Please direct questions, comments, or concerns to location.lib@gmail.com. Comment is only accepted Tuesday - Friday, 9:30 am to 4:30 pm.

PUBLIC COMMENT

This project will have no significant impact.

CONCLUSIONS

The Library of Approximate Location will be installed in a medium-to-large-sized hole in Point Arena, Calif. All relevant impacts were considered. The study finds that the project will have no significant impact.

EXECUTIVE SUMMARY

LIBRARY OVERVIEW

The Library of Approximate Location is an ongoing project exploring landscape, place, and the way we use information to define our relationships to the resources that enable modern life. The Library aims to triangulate a common space for exploration between these concepts, and provide a venue for conversation and inquiry. Just as Wendell Berry so profoundly identified the ruination of agriculture at the point where it was separated from culture, this project hopes to shore up our own cultural connections to the complex natural, industrial, and hybrid systems on which we rely completely.

The function of a library in this case is important. A library supplies materials to learn, interpret, and create narratives in an open-ended way, and to construct or deconstruct our relationship to the landscapes which supply the raw materials of life. This method of library as installation claims a physical space based not in commerce but in sharing and in non-monetized exchange in which to practice the commons while we explore this relationship with land and resources, and tinker with our perceptions.

PROJECT DESCRIPTION

The Project Site is located at 24000 Windy Hollow Rd, in Point Arena, Calif. roughly 10 miles NW of Library base in Oakland, Calif., and roughly 210 miles West of Library ancestral home in Carson City, Nev.

The Project location includes two fields one on the northern half of the property and one on the southern half. The Project Site is located in the southern half. [Fig. 1]

To minimize impacts, the project will utilize an existing hole on site, known locally as "the pit." Dug with a tractor, "the pit" is approximately 20' long, 5' deep, and roughly the same shape as the completed Library Hole, but narrower and with unfinished excavation walls. [Fig. 2]

As-built, Library Hole is roughly the shape of California -- approximately 24' long and 4.5' deep. A sloping ramp runs from the eastern end of the project, descending 1' for every 3' forward as it moves east. [Fig. 3]

The ramp proceeds at an angle of roughly 30° off the east west for 12', at which point the rest of the excavation turns to come more or less into line with the east west. At start of ramp the excavation is 5' wide, and widens to 6.5' at the turn. Along the northern side of the excavation is a bench incorporated into the wall, 2' high from the base depth. [Fig. 4]

Excavated material has been piled along the northern edge of the excavation, in a long mound which runs the length of the hole.

When complete (now), the library will be installed at the deepest point of the hole, using a mobile shelving unit.

SUMMARY OF IMPACTS

Labor Impacts

The combination of information and excavation work requires a highly-technical ground, and thus use of local labor would require extensive training and has been deemed not to be economical. However the light workforce required is not projected to have any impacts positive or negative on area employment rates.

SUMMARY OF IMPACTS, cont.

Carbon and Climate Impacts

Some carbon-sequestration capacity is sure to be lost in the removal of the vegetative layer and organic matter underneath. This has been mitigated by discouraging the use of Spotify on the job site. [Fig. 5]

Habitat Impacts

Non-systematic inventories of area species have been conducted according to project plan. Budget accounted for 2 hours observation time, in which the following species were discovered:

- Small green frogs
- Grasshoppers
- Vultures
- Redtail hawk
- Sparrows
- Bumblebees
- Small flies
- Hole of rodent (animal not present)

It is assumed that any species-loss on site will be offset by an increase in the diversity of the site information ecosystem once the project is operating.

Impacts on Romantic Life

Studies have been unsuccessful in establishing any romantic impact positive or negative.

Aesthetic Impacts

Since all construction requires some amount of excavation, the aesthetic value of such sites will not be debated here. It is assumed that aesthetics are somewhat subjective, and thus impacts will be impossible to assess.

Historic Impacts

No historic structures will be affected by this excavation.

Future Impacts

The entire Point Arena area belongs to the Bo-Ya, or Central Coast Pomo. It is anticipated that the presence of Library Hole will have little bearing on the eventual return of the land to the Bo-Ya.

Public Domain Impacts

Statistical studies show a positive impact on the Public Domain, possibly due to an unexpected increase in diversity of the "information ecosystem."

Social Media Impacts

Little social media fallout is expected at completion of the excavation. Since operation of the project will be ongoing, any fallout that does occur is expected to dissipate across the landscape and be well within safe levels.

RECLAMATION PLAN

This project presents a unique reclamation opportunity. Spoils from the existing excavation were previously piled on top of a dead tree on site, creating an ideal site for hügelkultur planting. Staff will engage local hippies to develop a regionally-sound seeding plan to optimize the use of this resource.

Recently-excavated material presents a unique challenge. Mostly comprised of gravels and riverbed materials, these soils are barren and difficult to plant, lacking in nutrients and water retention properties. To remediate these difficult areas, staff will plant carpets of fast-spreading Iceplant, which thrives in poor soils and low-precipitation conditions. This is anticipated to speed the reclamation process greatly, and increase efficiency and save costs on the job site. [Fig. 6] Environmental quality monitoring will be ongoing.

**-FINAL-
Environmental Impact Report**

for
Library Hole Project, Point Arena, Calif.



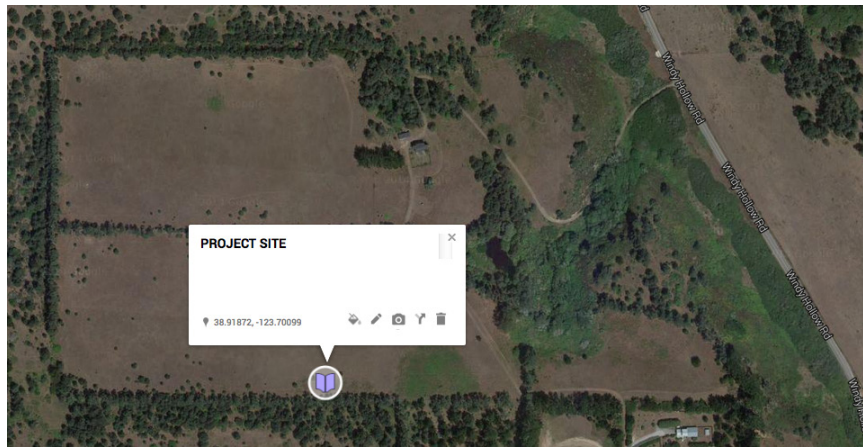


FIG. 1 : Library Hole Project Site

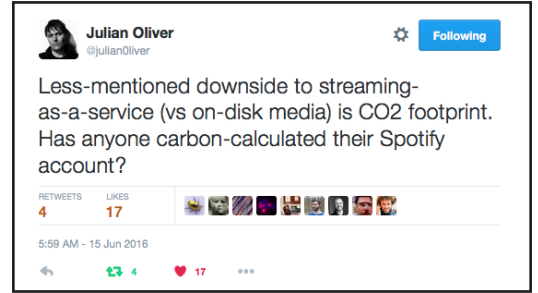


FIG. 5 : Background on carbon-saving strategy used on Project Site

FIG. 3 : Footprint of excavation for Library Hole Project. Ramp begins at eastern end of project and proceeds downward to the west.

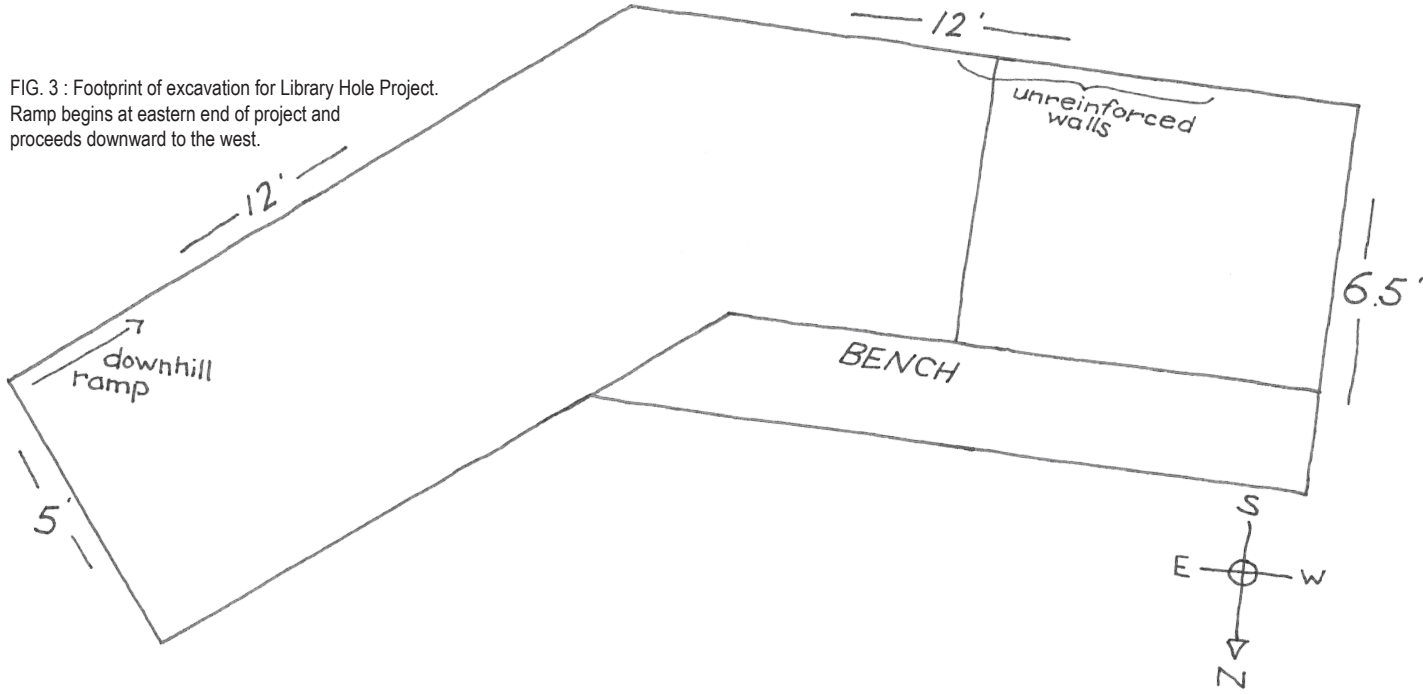


FIG. 2 : Project Site showing existing hole. ["the pit"]

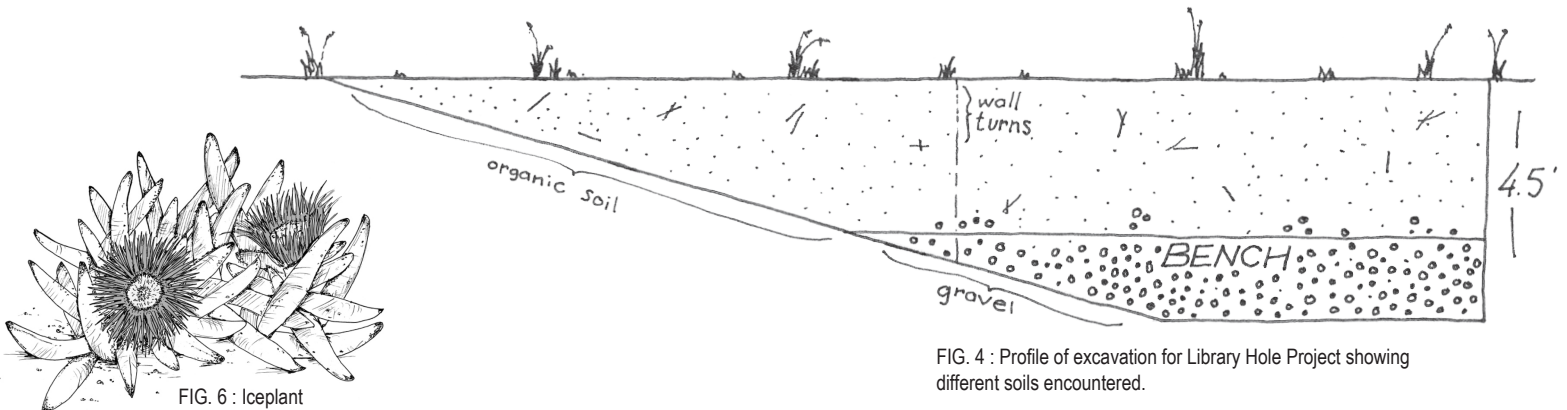


FIG. 4 : Profile of excavation for Library Hole Project showing different soils encountered.

FIG. 6 : Iceplant